

# **MODULINE<sup>®</sup>**

**ALUMINUM CABINETS**

## **PRO II<sup>™</sup> Series**



## **Aluminum Cabinets**

**Custom Garages | Commercial Shops | Trailers | Van Upfits  
Specialty Vehicles | Custom Designs & OEM**

Welcome to Moduline® Aluminum Cabinets — designers and manufacturers of the highest quality, American-made aluminum cabinets and toolboxes. No matter your project and no matter your industry, Moduline is the one name you need to know.

In over 30 years since our inception Moduline has become synonymous with precision, quality and performance, coupled with a modern, designer appearance. You won't find a more complete cabinet system out there.

With many innovative features and customizable options, Moduline cabinets have the versatility to meet the needs of almost any application in almost any industry; from custom garages to race trailers to shipping containers to vans and everything in between. Our **PROII**™ series cabinets are designed to last and are backed with a lifetime warranty.

We invite you to learn more about our cabinet systems in this catalog and on our website, then speak with one of our trained experts who will guide you through the design process and help you create the perfect solution for your application.



# Applications & Industries

Custom Garages **8-9**

Commercial Shops **10-11**

Trailers **12-13**

Van Upfits **14-15**

Specialty Vehicles **16-17**

Custom Designs & OEM **18-19**

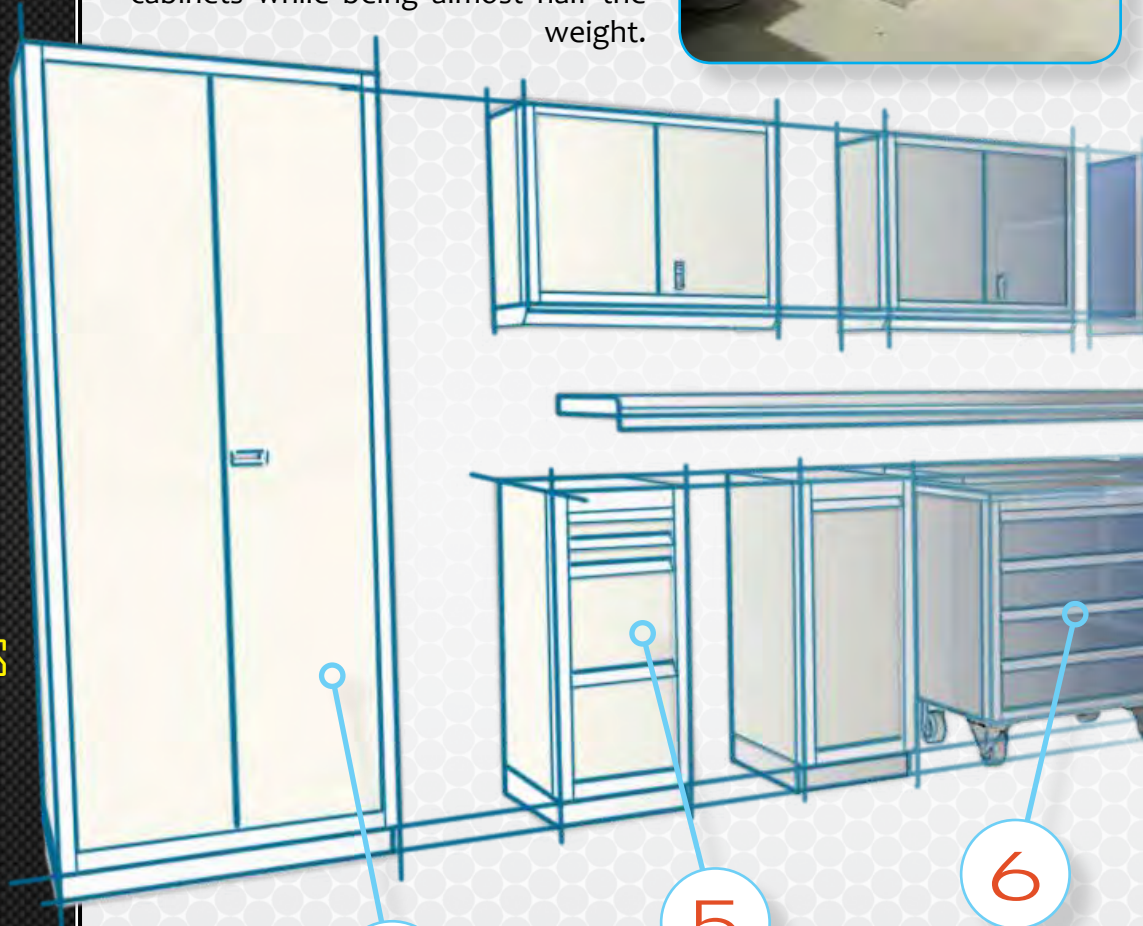


## Cabinet Modules

For the complete list of standard cabinets visit [ModulineCabinets.com](http://ModulineCabinets.com), go to the catalogs section and download either the **GARAGE AND SHOP** or **MOBILE APPLICATIONS** technical info & price list.

### Military-Grade Aluminum

Aluminum doesn't rust like steel or rot like wood when exposed to moisture, which makes it perfect for many applications. Our cabinets are engineered to be as strong or stronger than plastic, wood and most steel cabinets while being almost half the weight.



1

**BASE CABINETS**

2

**SINGLE DRAWER**  
"SD" Base Cabinets

3

**TOOLBOXES**  
With QuikDraw®

4

**BIG DRAWER™**  
Toolboxes

5

**SPECIALTY CABINETS**  
File Cabinet, Parts Bin  
& Rubbish Bin

6

**ROLLING CABINETS**  
& Rolling Toolboxes

7

**CLOSETS**

8

**WALL CABINETS**

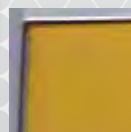
9

**ACCESSORIES**  
Shelves, Space Saver™  
& Wheel Well Cabinets

**HIGH  
GLOSS  
FINISH\***

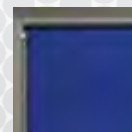
7

Red



Yellow

Moduline  
Blue



Light Gray

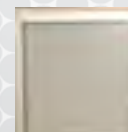
5

Royal  
Blue



Custom Colors Available  
(Including Clear Anodize)

White



Signature  
Black

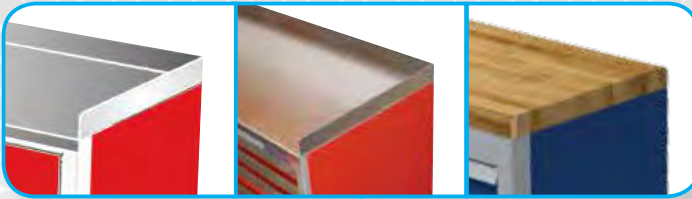


6

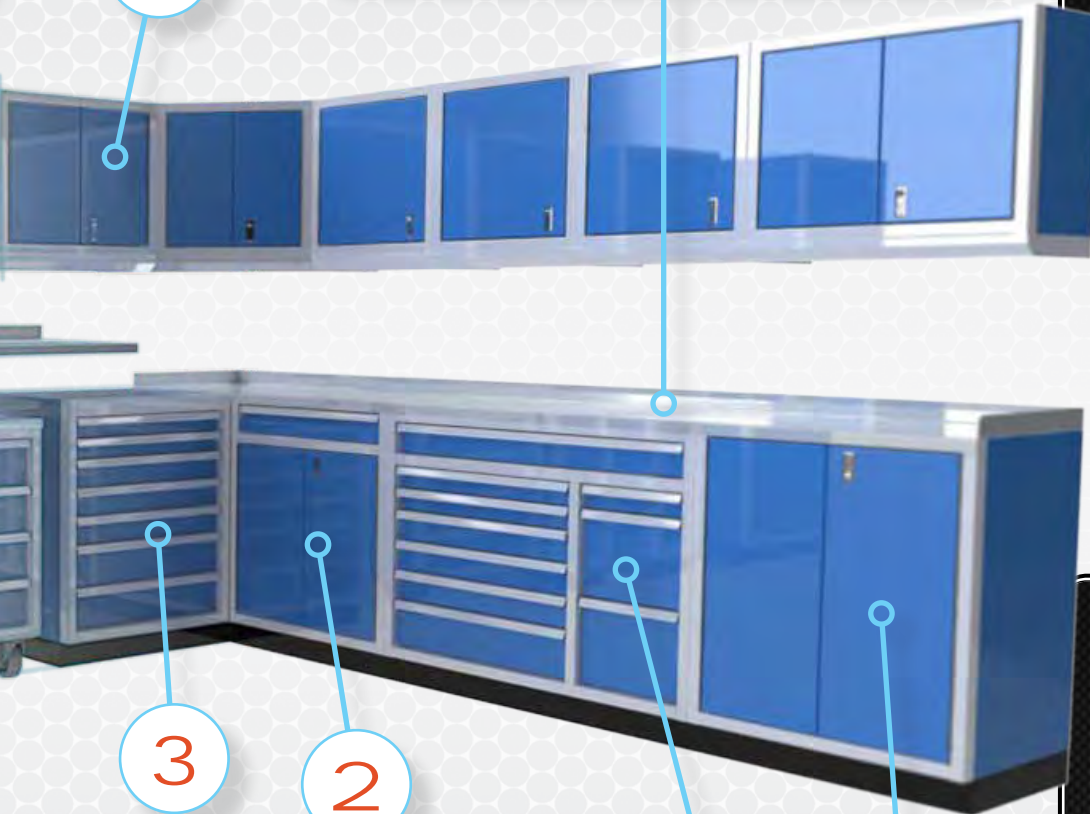
## Modular Design

Moduline Cabinets are Modular. That means each cabinet is a building block, and you can choose whichever cabinets you like and put them together in lots of different ways.

*Solid aluminum, stainless steel, or butcher block countertops*



8



3

2

4

1



## Innovative Solutions

Don't want to build your own?  
Or just need some inspiration?

Choose a premade cabinet combination from our online shop at [ModulineCabinets.com](http://ModulineCabinets.com).

## Complementary Design Service

With so many styles and sizes to choose from, piecing together the perfect cabinet setup from scratch can feel a little daunting, but it doesn't have to.

Our expert cabinet designers will work with you, one-on-one, to create a layout that fits your space, budget and is functional. We'll provide you with detailed drawings so you can see how your cabinets will look and be confident that you're getting exactly what you want.

## Professional Features

- Military-Grade Aluminum
- QuikDraw® Latch System
- Clear Anodized Frames
- Adjustable Toe Kick Riser™
- Trigger Latch
- and More!

**QuikDraw®**  
*Single Action Latch System*



## Safety

Drawers stay closed, even in transit.

## Innovation

Patented design that doesn't sacrifice any drawer capacity.

## Ease of Use

Lift anywhere with just one finger.





Toolbox with Big Drawer™

## QuikDraw® Toolboxes

Moduline aluminum toolboxes are half the weight of steel boxes which means they're easier to move around. Our patented Quik-Draw® latch system keeps drawers securely closed and comes standard on all drawers. The Big Drawer™ reinforced top drawer is perfect for longer tools, sockets and more.



Single Action Latch System

Whisper-Quiet, One-Finger Operation

PAT #9,149,117

**QuikDraw®**  
Single Action Latch System

### Safety

Drawers stay closed, especially in transport.

### Innovation

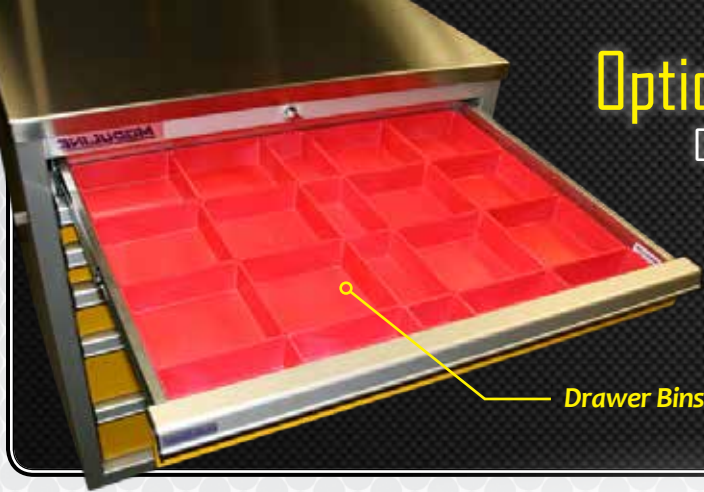
Patented design that doesn't sacrifice any capacity.

### Ease of Use

Smooth, whisper-quiet, one-finger operation.

## Optional Accessories

Customize your toolbox



Drawer Bins

Extreme Drawer Liner

Adjustable Aluminum  
Drawer Dividers



### Real Support

Big Drawer™ Toolboxes have bonus support slides under the full-length top drawer for increased weight capacity and stability.



### Heavy-Duty Slides

Full-extension, ball bearing slides open smoothly even when the drawers are fully loaded with tools.

## Big Drawer™ Rolling Toolboxes

- Full Length Top Drawer
- QuikDraw® Single-Action Latch System
- Anodize or Color-Match Frames
- Shock Absorbing Casters
- Key Locks
- Available in 48" and 60" Wide



Shock-Absorbing Casters  
with Polyurethane Wheels



## High-End Custom Garages

The modern garage is an extension of the home and its design should reflect the same qualities. Moduline cabinets have the perfect look to compliment any garage, be it a “man cave”, personal workshop or backdrop for a fine automobile or two.

Our consultative approach will ensure you get the right system for your space. We'll provide CAD drawings, make suggestions and help you every step of the way. At Moduline, we're not happy until you're happy.



## Specialty Cabinets

Special solutions to specific problems.

Have a lot of nuts, bolts and other small parts? A parts bin cabinet is a great way to organize while keeping those parts easily accessible. File cabinets store manuals, warranty papers, receipts and other papers that need filing but even if you don't have that need, the high-capacity drawers are also great for air tools or other bulky items. And why not keep trash or recycling hidden away in a rubbish bin, helping to keep your space clean and looking its best.

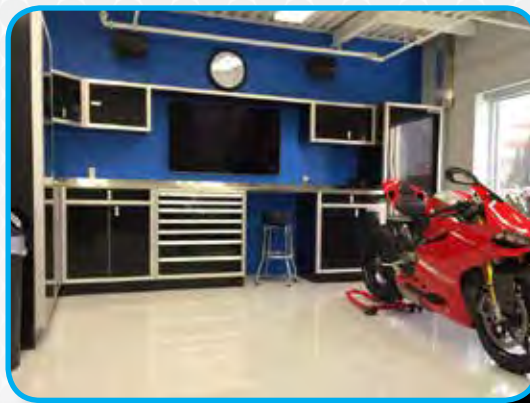


Rubbish Bin

Parts Bin



File Cabinet



## Corner Wall Cabinets

The perfect solution to utilize the inside corner wall space that might otherwise not get used and looks great!



## Adjustable Toe Kick Riser™

Adjustable Toe Kick Risers™ let you easily shim to compensate for sloped garage floors. Continuous contact with the floor gives any garage a neat, professional appearance.





## Commercial Shops

Moduline cabinets are designed for tough work environments such as dealerships, manufacturing facilities and aircraft hangars, to name just a few. Not only will they enhance the look of your shop, they're also made from durable, military-grade aluminum. The design includes integrated frames, extra support gussets, double-reinforced corners, full-length hinges and double-wall door construction which makes them as strong as or stronger than many steel cabinets. Aluminum cabinets also resist corrosion, fingerprints and discoloration. Without question, **PROII™** series cabinets are commercial-grade quality.

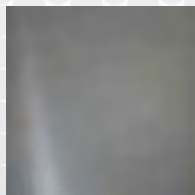


## Pull-Out Shelves

Commercial shops need a lot of storage.

Closet cabinets are a great for organizing your shop and getting bulky tools, containers and bottles off your countertop, but constantly needing to get at things pushed all the way to the back can be a real pain.

Adjustable pull-out shelves give you easy access to the entire closet, all the way to the bottom, without having to awkwardly fish around. When it's easy, you don't have any barriers to maintaining an organized shop.



Aluminum



Stainless Steel



Butcher Block

## Durable Countertops

Countertops in commercial environments see heavy use and are often exposed to harsh chemicals. Moduline countertops are tough, durable and made of solid material unlike laminate countertops.

Moduline offers three different countertop options:

*Solid Aluminum, Stainless Steel or 1 3/4" Thick Butcher Block*





## QuikDraw® Rolling Toolboxes

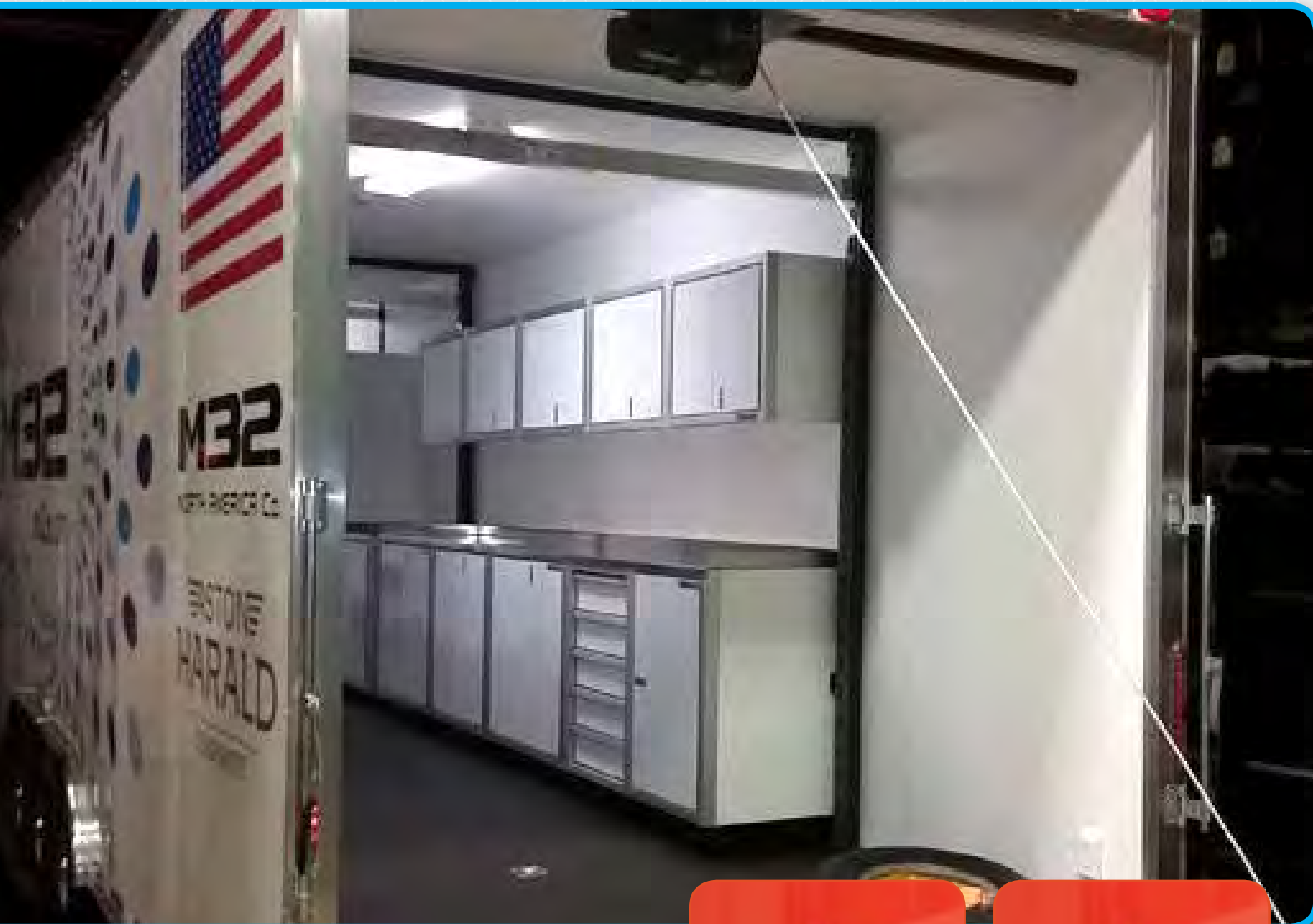
Moduline rolling toolboxes are the perfect addition to any commercial shop looking to save money by getting the job done quicker. Instead of going back and forth between your cabinets and the workpiece, streamline your workflow and eliminate that wasted motion by bringing not only your tools, but also a large, durable work surface wherever you need them most.

QuikDraw® rolling toolboxes are available with an anodize or color match frame, have a solid stainless steel top and heavy-duty, shock-absorbing casters.



## Trailers & Fun Movers

When it comes to trailer cabinets, they need to be lightweight yet have the strength to stand up to the rigors of the road. Moduline cabinets answer that call. Used by professional race teams, the military and numerous local, state and federal agencies, our aluminum cabinets keep the GVW down while providing commercial-grade strength. Our QuikDraw® latch system keeps drawers shut while in transit but are easy to open with one finger anywhere along the handle. The modular design allows for almost unlimited configurations so whether you have a V-nose or stacker trailer, Moduline has a solution.



### Trigger Latches

One-touch trigger latches come standard on all Moduline **PROII**™ Series cabinets. Heavy-duty, spring-loaded lever arms hold the doors closed tightly so they won't rattle while in transit and nothing will be jostled open from a rogue pothole or bumpy dirt road.



## Lightweight Aluminum

With a greater strength to weight ratio than steel, you get professional, durable cabinets that are about half the weight. This can help improve the GVW saving you money and making your trip to the track a much safer one.



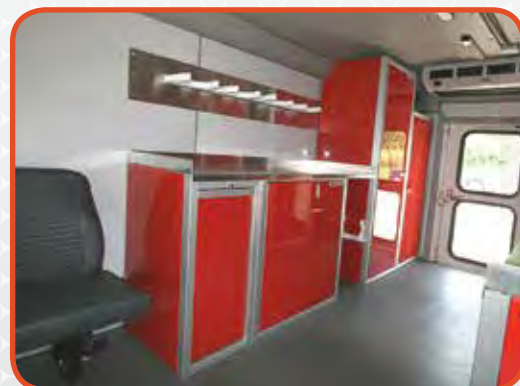
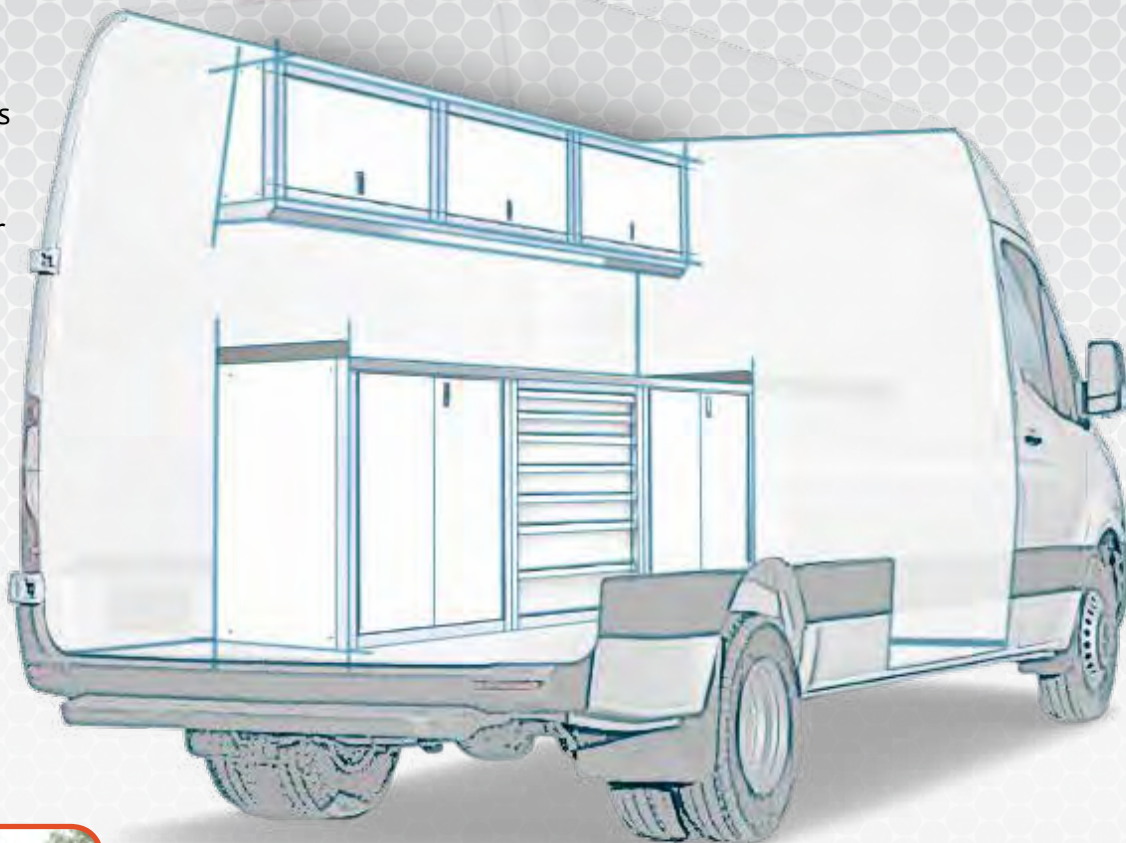
## QuikDraw® Single Action Latch System

With our patented latch system, both ends of the drawers latch independently making it twice as effective in keeping drawers securely closed in transit without the need of having to lock them. Pull anywhere along the handle with just a finger giving you smooth, easy access to all your contents in the drawer.



## Van Upfits

Vans have become one of the fastest growing vehicle solutions for many industries and Moduline cabinets give you so many solutions for getting the most out of your van. Any of our **PROII™** cabinets can be utilized and profiled for your specific brand of van. We're more than just basic shelves. We provide the best aluminum toolboxes and enclosed storage cabinets to keep you working efficiently, securely and safely all while keeping the weight down.



## Lightweight Aluminum

Lightweight doesn't mean light duty. Vehicle cabinets have more demand placed on them than cabinets in a shop. Our military-grade aluminum and cabinet design gives you cabinets that will last forever all while keeping the weight in the vehicle to a minimum.



## Lift-Up Doors

Space in a van is at a premium and there often isn't room for an overhead cabinet door to swing open. Also, you can't always park on perfectly flat ground and free-swinging doors at head height can be hazardous while on an incline. Our lift-up doors hinge from the top so they sweep a smaller area when opening, and come with a hydropneumatic gas spring to hold the door up so both your hands are free.



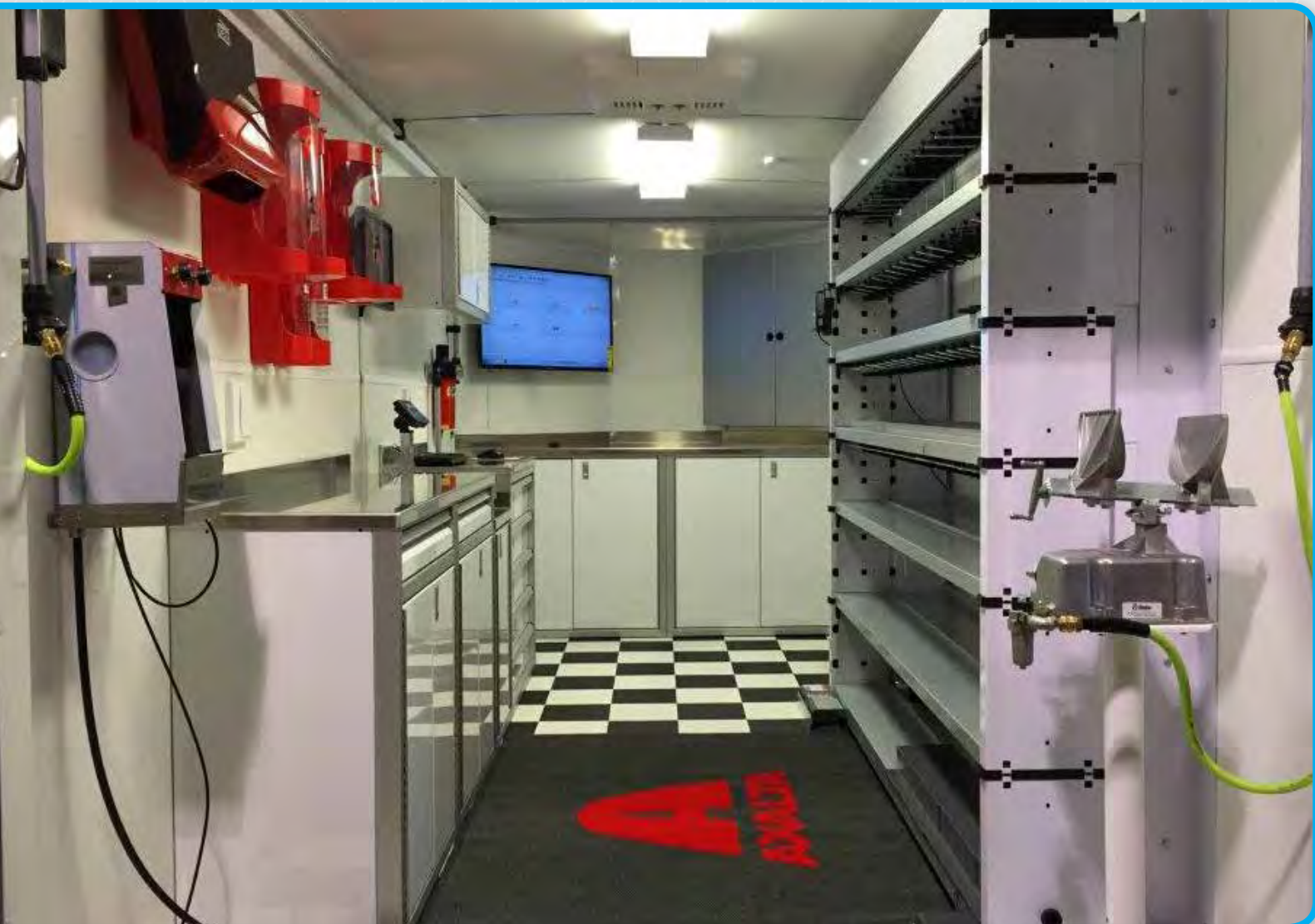
Featuring  
**Quik Draw**  
Single Action Latch System

Quik Draw



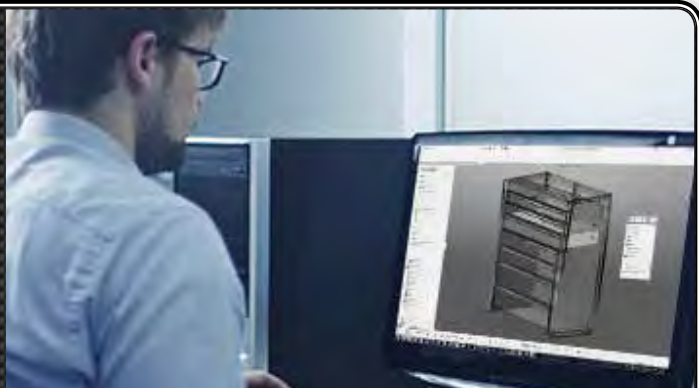
## Specialty Vehicles

Moduline has been providing custom specialty cabinet solutions to commercial operations and government agencies for over 30 years. Our team of engineers, craftsmen and design consultants know how to achieve the most efficient solutions for your needs. We are ready to assist with your project whether it be a standard or fully customized solution.



## Complementary Design Service

Understanding the best use of space in your vehicle and how to make a cabinet system work the best for your needs is important but something not everyone understand how to do. Moduline does. Moduline offers a complimentary design and layout service to help you every step of the way. It's just what we do.



# QuikDraw®

## Single Action Latch System

When you have cabinets and drawer units in a vehicle, one of the most important thing to have is a drawer that stays shut it transit. QuikDraw® allows our drawers to stay shut even when not using a key and also allows you to easily access and open naturally with just one finger.



### Precision Commercial Cabinets

- Mobile Command Centers
- Maintenance & Utility
- Motor Sports
- Medical
- Federal Government
- Law Enforcement
- Military
- Municipal
- Marine
- Private Contractors

With so many industries using all types of vehicles to conduct business, the need for high quality storage and toolboxes has become even more important in today's business environment. Finding the right cabinets for the right vehicle for the right workload can be challenging. Moduline will help design a layout for your vehicle no matter if it's a work truck, mobile command center or shipping container. Our military-grade aluminum cabinets will keep the weight down without sacrificing strength. Our drawer units come equipped with the patented QuikDraw® latch system and heavy duty, full-extension, ball bearing drawer slides. Wall cabinets and lockers can be profiled to match any of today's van profiles and our many standard cabinet sizes will allow us to turn your vehicle into the perfect mobile workshop or office.



## Custom Designs & OEM

If you have a special requirement or design needed for your business, Moduline has been creating customized solutions for companies for over 30 years. From custom kitting carts in the aerospace industry to boxes for specific maintenance tools, we can create one-off customs tailored to your product or application. We'll work with you every step of the way to ensure you get the right solution for your projects whether it be for one unit or hundreds of units.

## Customs

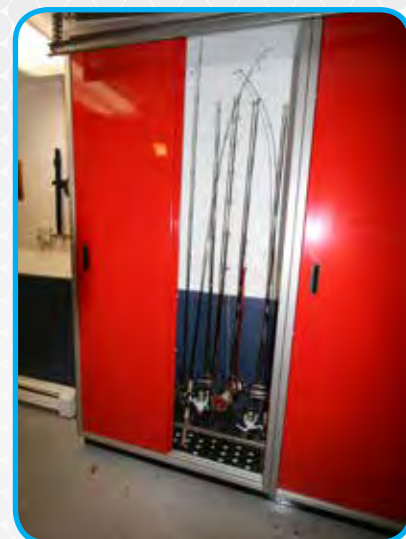
Although we offer a wide range of cabinets in various sizes, we also specialize in custom cabinets designed specifically for your special application. Whether it is just an alteration of size or something completely unique, our mission is to help you with any design, engineering and development of a cabinet tailored for you.





## Manufacturing Capabilities

We aren't just an assembly line production facility. We're a nimble manufacturing company that has the capability of working with you one on one to create a cabinet system that works for you. Whether you need 1 unit or 100 units, we're flexible enough to handle the demands of our clients no matter if they are a Fortune 500 company or a local establishment.



## Consultative Design

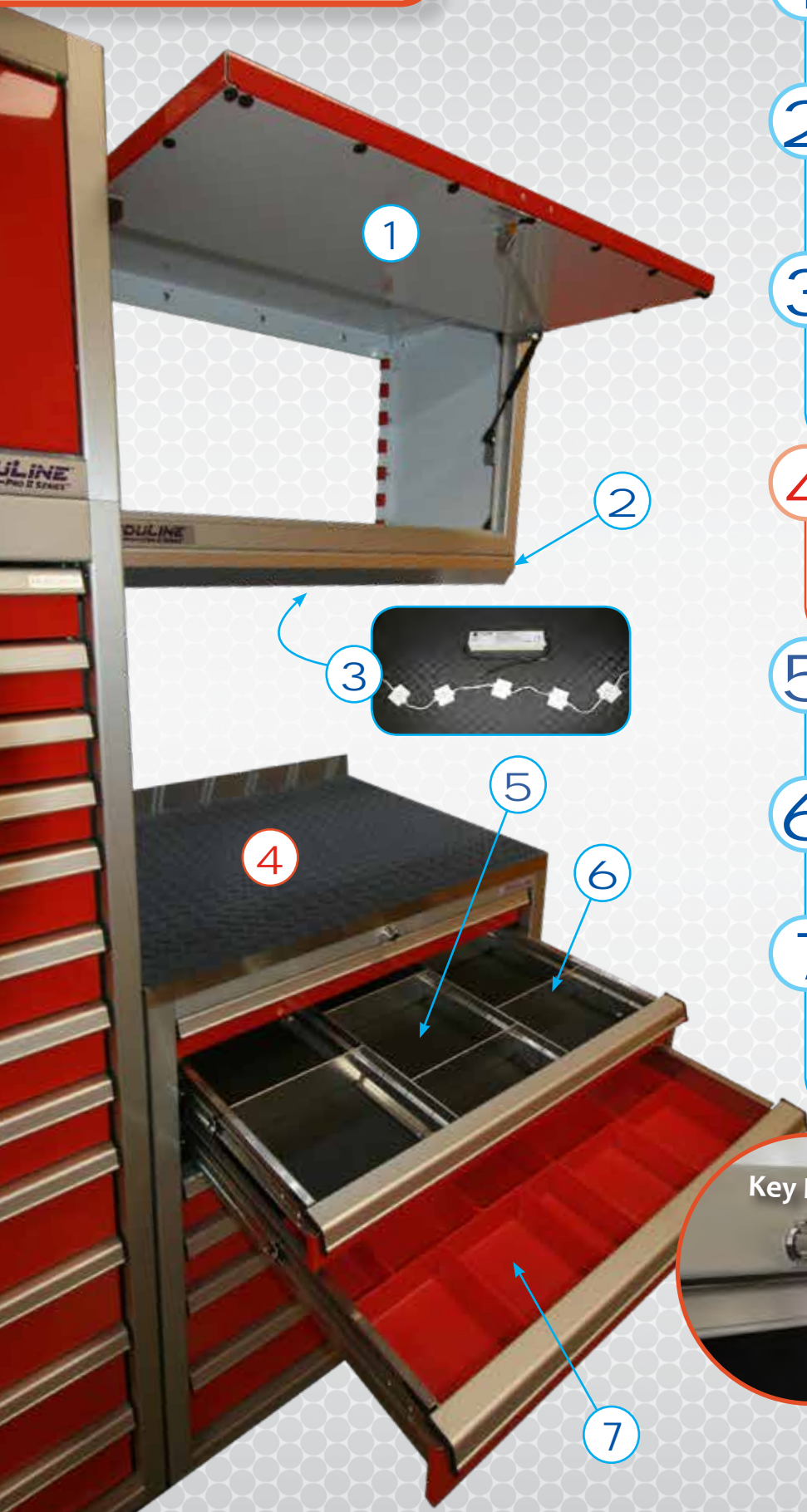
Many of our clients know exactly what they want. Many however just have an idea. Moduline will help take those ideas and work with you to come up with a solution that makes sense for you, the available space you have and your budget. Let one of our trained cabinet experts help make your project a reality.



**CALL TODAY!**



# OPTIONS



1

## Lift-Up Doors

- Available on all overhead wall cabinets
- Hydropneumatic spring holds door open
- Frees up your hands

2

## Light Shields

- Accents your cabinets for a finished look
- Shield LED lights from direct view
- Anodized Finish
- Easy Installation

3

## LED Lighting

- Great way to illuminate your work surface
- Simply stick to back of light shields
- 160 lumens per foot
- 6500K "daylight" color temperature

4

## Bench Mat

- Protects your countertop
- Prevents workpiece slippage
- Diamond tread pattern
- 5/32" thick black vinyl

5

## Extreme Liner™

- The best toolbox drawer liner available!
- Protects tools and holds them in place
- Solid, non-slip, PVC-coated polyester
- 1/8" thick padding

6

## Drawer Dividers

- Adjustable to fit any size parts
- Military-grade aluminum
- (2) center rails & (6) dividers per drawer

7

## Drawer Bins

- Removable and rearrangeable
- High-impact polyester (HIPS)
- 1 3/4" tall bins

Key Locks

Sinks  
Available



8

**Double Doors**

- Available on bases & closets over 24" wide
- Closets have slam latch
- Great for smaller spaces

9

**Pole Kit**

- Available on all closets
- Store jackets and other hanging items
- Securely mounts to top of closet

10

**Adjustable Shelves**

- Easily shifts into place for quick adjustment
- Bolts in the front for superior strength
- Adjustable in 2 1/4" increments
- Hardware included
- Military-grade aluminum

11

**Adjustable Pull-Out Shelves**

- Fits all ProII™ Cabinets and Closets
- Great for storing large, bulky items
- Full-extension, ball bearing slides
- Adjustable in 2 1/4" increments
- Hardware included
- Military-grade aluminum

12

**Bottom**

- Blocks off the space below the Toe Kick
- Drop-in installation
- Military-grade aluminum

13

**Adjustable Toe Kick Riser™**

- Adjusts to compensate for uneven floors
- Gives your space a professional appearance
- More foot space lets you stand comfortably
- Shims concealed between toe kick and cabinet
- Available in 2" and 4" heights



*Cabinet backs are available but are not required*

**Power Grid™**

- Perfect and convenient way to incorporate electrical and USB
- Brushed stainless steel finish looks great with any of our countertops
- Pre-punched access holes for easy wiring
- Available in three lengths that can combine to fit your length
- End caps create a clean finished appearance



## Folding Workstations

- Completely assembled, ready to install: create an instant, concealable workspace
- Available 24" or 44" wide (fold-out aluminum bench is 22" or 42" wide)
- Open bench is 20.5" deep and x 1.75" thick reinforced aluminum
- Closed position is 22.5" h x 6.5" d
- Military-grade aluminum, wall mounted workstation supports heavy loads
- Durable baked enamel finish in red, white, black or Moduline blue
- Steel hinge pins, bench supports and pivot points for maximum strength and wear resistance
- Bench locks securely in open and closed position
- Two 4 1/2" d shelves for tools/supplies
- UPS shipping available on this item



24" wide folding workstation



44" wide folding workstation



Closed position folds to only 6.5" Deep!



## Aluminum Fold-Out Shelf

- Neatly store cleaners, degreasers, paper towels and more!
- Convenient fold-out shelf
- Military-grade aluminum
- Ships fully assembled
- Holds up to 4.5" dia. cans
- Available in white
- 36" H x 5.5" D x 24.5" W

## Oil Rack

- Neatly store oil cans, bottles, and more!
- Military-grade aluminum
- Ships fully assembled
- Holds up to 4.5" dia.
- Available in black or white
- 36" H x 5.5" D x 24.5" W





## Executive Desks

- Features QuikDraw® Latches
- 30.75" High x 36" Deep x 70.5" Wide
- File cabinets, wide center drawer and back
- Available with either:
  - 1 3/4" thick Butcher Block top
  - Solid Aluminum top
- Other sizes available (call or visit website)



## Fuel Jug Holder

- Neatly store fuel jugs or other gear
- Assembly required; hardware included
- Military-grade aluminum
- Can be mounted on walls or the floor
- Each unit holds one fuel jug
- Fuel Jug not included

## Aluminum Folding Table

- Solid, military-grade aluminum top
- Very lightweight!
- Hat bracing for maximum strength and rigidity
- Heavy-duty, tubular folding legs lock open
- Available 48" and 72" long
- Ships fully assembled



Optional Easy Mounting Kit  
securely holds folded table  
in trailer or vehicle while  
not in use

## Helmet Holder

- Features a built-in rack for hanging uniforms, goggles, etc.
- Includes removable soft foam lining
  - Ships fully assembled
  - Install with simple tool
- Mounting hardware included



If you do not see the product you want please call for more information.  
Moduline is a full line Reelcraft® distributor. For internet discounts and  
special offers, order online at [www.ModulineCabinets.com](http://www.ModulineCabinets.com)



Series 4000  
4625 OLP

## Premium Industrial Spring-Driven Reels Series 4000 & 5000

Reelcraft's Series 4000, 5000 and 5005 reels are all steel construction and compact for a wide range of applications with critical space requirements. A full flow shaft and swivel assures maximum product delivery. LOW PRESSURE/AIR WATER REELS. Maximum temperature 150° F (65° C)

Model	Hose I.D.	Hose Length	Max PSI	(M) NPTF Hose Outlet	(F)NPTF Reel Inlet	Dimensions L x W x H (in.)	Weight (lbs)
4425 OLP	1/4"	25'	300	1/4"	3/8"	12 <sup>7</sup> / <sub>8</sub> x 5 <sup>3</sup> / <sub>8</sub> x 12 <sup>7</sup> / <sub>8</sub>	19
4435 OLP	1/4"	35'	300	1/4"	3/8"	12 <sup>7</sup> / <sub>8</sub> x 5 <sup>3</sup> / <sub>8</sub> x 12 <sup>7</sup> / <sub>8</sub>	20
5450 OLP	1/4"	50'	300	1/4"	3/8"	13 <sup>1</sup> / <sub>2</sub> x 6 x 14 <sup>1</sup> / <sub>2</sub>	26
4625 OLP	3/8"	25'	300	1/4"	3/8"	12 <sup>7</sup> / <sub>8</sub> x 5 <sup>3</sup> / <sub>8</sub> x 12 <sup>7</sup> / <sub>8</sub>	22
5635 OLP	3/8"	35'	300	1/4"	3/8"	13 <sup>1</sup> / <sub>2</sub> x 6 x 14 <sup>1</sup> / <sub>2</sub>	25
5650 OLP	3/8"	50'	300	1/4"	3/8"	16 <sup>1</sup> / <sub>2</sub> x 6 x 17 <sup>1</sup> / <sub>2</sub>	36
A5825 OLP	1/2"	25'	300	1/2"	3/8"	13 <sup>1</sup> / <sub>2</sub> x 6 x 14 <sup>1</sup> / <sub>2</sub>	29
A5850 OLP	1/2"	50'	300	1/2"	3/8"	16 <sup>1</sup> / <sub>2</sub> x 7 x 17 <sup>1</sup> / <sub>2</sub>	44

## Light Cord Reels Series L4000

Reelcraft's Series L4000 power and light cord reels are easy to mount and structurally strong. The reels have a robotically welded heavy gauge steel frame that attaches to most structurally sound surfaces

Model	Cord Ending	Cord Specifications					Weight (lbs)	
		AWG	# Cond.	Length	Type	Volts		
L 4050 163 1	Incandescent	16	3	50'	SJTOW	115	13	23
L 4050 162 2	Fluorescent	16	2	50'	SJTOW	115	0.3	24

Series L4000  
L 4050 162 2





ModulineCabinets.com

Phone: 508-580-4445

Toll Free: 888-343-4463

Fax: 508-580-5199



#### TERMS AND CONDITIONS

**Payment Terms:** We accept: VISA, MC, American Express, PayPal, cash and check. The Charge for credit card purchases will appear on your Credit Card Statement as: Gill Metal Fab, the manufacturer of Moduline Aluminum Cabinets. Payment by check must be received and processed prior to shipment. Custom and sizable orders require 50% down with payment in full before shipment.

**Lifetime Warranty:** For complete details about our Lifetime Warranty please visit [www.modulinecabinets.com/warranty](http://www.modulinecabinets.com/warranty)

For complete Terms and Conditions please visit [www.modulinecabinets.com/terms](http://www.modulinecabinets.com/terms)

Moduline reserves the right to revise product specification and prices.